

# EXPERIENCE THE DIFFERENCE

UPGRADE TO OUR BEST  
EVER CAR WASH WITH  
RAINTECS® & SHINETECS®  
TECHNOLOGY

## PREMIUM PLUS

RainTecs®

Double ShineTecs®

High pressure wash

Soft brush wash

Double foam

Wheel and sill wash

Rinse aid

Drying

Power wheel wash

Underbody wash



## PREMIUM

Double ShineTecs®

High pressure wash

Soft brush wash

Foam

Wheel and sill wash

Rinse aid

Drying

Power wheel wash

Underbody wash



*Standard and budget wash also available*

# EXPERIENCE THE DIFFERENCE

TRY OUR BEST EVER  
CAR WASH WITH  
RAINTECS® & SHINETECS®  
TECHNOLOGY



## Simple, quick and effective

Automatic machine washing is an economical, hassle-free way to keep your car in top condition. Our modern machines use electronic sensors that are guided by the contours of your car, penetrating traffic film and removing dirt, dust and residues. Our brushes are carefully calibrated to provide a deep, effective clean while also being gentle on paintwork.

## Our best ever car wash

We have now introduced next generation car wash facilities at selected locations nationwide. These car washes raise the bar by harnessing the latest technologies available in the market, including the innovative ShineTecs® and RainTecs® formulae, to bring you the best wash available in the marketplace.

## ShineTecs® Technology

Paintwork protection with 'repair effect'. ShineTecs® has a unique acrylic formula that's better than wax! It strengthens and increases protection with every wash to bring back that high-shine new car look.

### How the ShineTecs® 'repair effect' works:



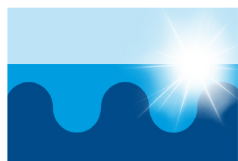
1. New car paintwork has a smooth surface in the transverse section. Light can reflect to the maximum effect and the car shines.



2. When exposed to everyday driving, surfaces pick up microscopic, fine dents and scratches. The reflectivity and the shine diminishes.



3. ShineTecs® fills in these tiny dents and scratches. The colourless acrylic ionic protective layer cures in a matter of hours and remains permanently on the paintwork!



4. With each further wash, the new protective layer becomes even stronger. The vehicle's paintwork shines like new again!

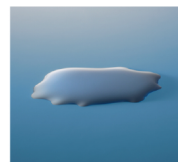
## RainTecs® Technology

Thanks to its high quality formula, RainTecs® lends all paintwork a tremendous shine. The integrated shine enhancers help to produce a brilliant finish. In addition, the paintwork surface receives a lasting, protective layer, which produces a special beading effect. As such, RainTecs® treats and protects the paintwork against aggressive weathering and environmental influences, which in turn can extend the life of the vehicle.

After being treated with RainTecs®, motorists benefit from significantly enhanced visibility in the rain. This is achieved thanks to the special beading effect, which ensures that the windscreen is cleared quickly and efficiently of rainwater. As such, driving in adverse weather conditions becomes altogether more pleasant and, above all, safer.



### How the RainTecs® 'beading effect' works:



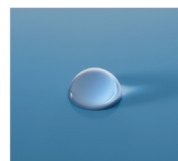
#### Untreated surface

To remove dirt, it is necessary to use detergents when washing vehicles. As a result, this renders vehicle surfaces (paintwork and glass) hydrophilic, i.e. water droplets spread out flat and over a large area without beading.



#### Surface treated with conventional wax

Hydrophobic care products reduce the contact area between the water droplets and vehicle surface, i.e. smaller water droplets are produced that roll off well.



#### Surface treated with RainTecs®

Using the innovative RainTecs® formula renders the vehicle surface even more hydrophobic. Water droplets roll off better, leaving fewer residues, in turn promoting drying and producing an intense shine.